

Wyre Forest Study Group - Plant Group

ANN HILL

Over the past year, members of the Wyre Forest Study Group (WFSG) have been recording wild and naturalised plants (but not planted or garden species) in flower during monthly field meetings. The study originated from a mix of the Botanical Society of Britain and Ireland's New Year Plant Hunt, Covid-19 restrictions and missing the pleasure of meeting up with like-minded botanical friends. The aim was: i) to gather baseline data on flowering plants in Wyre throughout the year; ii) to help improve plant identification skills; and iii) to get enjoyment from the social aspect of the monthly field meeting.

The lockdown prevented recording in the early part of 2021 so flowering plants recorded on 4th January 2022, by the author, have been included in this write-up. Gradually emerging from the Covid-19 lockdown, the first field meeting of the year was held in April 2021, although group numbers were restricted. Plants had to be actually flowering i.e. that catkins on trees were open, that grasses had open florets, stigmas or anthers on show etc. Plants that only had buds or seed heads were not recorded and neither did the group record ferns, mosses, fungi or lichens.

Twenty-three plant recorders took part in ten field meetings, Table 1. Field meeting venues were selected to provide a variety of habitats across Wyre in which to record.

The plant group found, identified and recorded an amazing number of flowering plants during the study:

submitting 609 records of 294 plant species in bloom, Table 2.

The six species most frequently recorded in flower in rank order were *Poa annua* (10/10) and *Senecio vulgaris* Groundsel (8/10). *Bellis perennis* Daisy, *Geranium robertianum* Herb-Robert, *Lapsana communis* Nipplewort and *Plantago lanceolata* Ribwort Plantain were noted on 70% of the field meetings. 50% (146) flowering plants were recorded on only one field meeting.

To give an insight into how many species were in flower during the different seasons, field meetings were grouped according to the UK Meteorological Office definition of seasons: spring (March, April, May), summer (June, July, August), autumn (September, October, November) and winter (December, January, February). <https://www.metoffice.gov.uk/weather/learn-about/weather/seasons/> (Figure 1).

Unsurprisingly, more plants were in flower in the summer with a decreasing number through autumn, spring and winter. Urban and open areas tended to have more species in flower than under the closed woodland canopy. As always, the species records are an artefact of where the group walked and what species were spotted and not what may have been actually in flower. However, the results do give an indication of the variety of wild and naturalised plants in flower in Wyre throughout the year.

Table 1: List of Wyre Forest Study Group - Plant Group field meetings showing meeting details and number of flowering plants recorded.

Date	Number of Flowering Plants	Recorders	Site	Dominant Habitat
07/04/21	38	AH, GH, SH, RH, JS, MD	Earnswood Copse, Wyre	Woodland, road verges
05/05/21	67	AH, MD, JH, JS, RM, SH, CT, JT, JC, DD (2 groups)	Devil's Spittleful, Kidderminster	Heathland
07/07/21	91	AH, JS, RH, MD, JH, JT, CT, JP	Ribbesford Woods	Woodland
04/08/21	82	AH, GH, MD	River Severn (west bank), Bewdley Town Centre	Tall ruderal, marginal, river bank, urban
14/08/21	106	JH, MD, JS, FF, JB, DB, JP, TW	Trimpley Reservoir & Eyemore Wood	Reservoir environs; Woodland
01/09/21	89	AH, SL, MD, TW, JT, CT	Unclys Farm, Wyre	Woodland, meadow
06/10/21	34	AH, JS, RH, MD, HH, JH, JT, CT	Wyre Forest & Arboretum	Woodland
03/11/21	67	AC, AH, BW, CB, JH, JS, MD, TW	Kidderminster Town Centre	Urban
01/12/21	28	MD, JH, TW, CB	St Leonard's Churchyard, Ribbesford & Ribbesford Wood	Cultivated/disturbed land; woodland
04/01/22	7	AH, GH, MD, JS, RH, JH, JC, JL	Disused railway line, Wyre	Woodland rides

Wyre Forest Study Group

At the end of the year and after so many worries about virus conditions, it was really wonderful that these field meetings have been so enjoyable and produced plant lists that may be of future use to Wyre botany. It has been an interesting small study, thwarted by Covid-19 as so many projects will have been this past year, but hopefully, this work will be developed further in future years.

A big thank you goes to the following study group members who joined in the field meetings, spotted flowering plants and shared plant identification skills: Andrew Curran, Ann Hill, Brett Westwood, Carol Taylor, Cesca Beamish, Dave Dench, Denise Bingham, Frances Finch, Graham Hill, Helga Hall, Jackie Hardy, Jane Pope, Jane Scott, Jen Loyd-Pain, John Bingham, John Cox, John Taylor, Marian Davidson, Roger Meade, Rosemary Hill, Steve Horton, Susan Limbrey and Tom Ward.

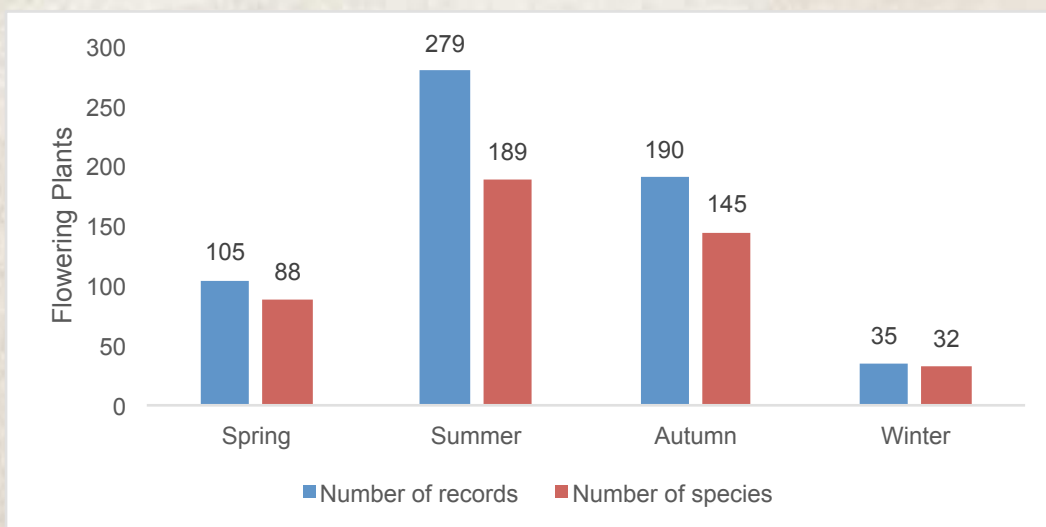


Figure 1: The number of flowering plants recorded during Wyre Forest Study Group – Plant Group field meetings grouped according to the UK meteorological office definition of seasons.

Table 2: Flowering plants recorded during ten Wyre Forest Study - Plant Group field meetings.

Taxon	Vernacular	07/04/2021	05/05/2021	07/07/2021	04/08/2021	14/08/2021	01/09/2021	06/10/2021	03/11/2021	01/12/2021	04/01/2022
<i>Acer campestre</i>	Field Maple										
<i>Acer pseudoplatanus</i>	Sycamore										
<i>Achillea millefolium</i>	Yarrow										
<i>Aethusa cynapium</i>	Fool's Parsley										
<i>Agrostis capillaris</i>	Common Bent										
<i>Agrostis gigantea</i>	Black Bent										
<i>Agrostis stolonifera</i>	Creeping Bent										
<i>Ajuga reptans</i>	Bugle										
<i>Alchemilla mollis</i>	Garden Lady's-mantle										
<i>Alliaria petiolata</i>	Garlic Mustard										
<i>Alopecurus pratensis</i>	Meadow Foxtail										
<i>Amaranthus hybridus</i>	Green Amaranth										
<i>Anagallis arvensis</i>	Scarlet Pimpernel										
<i>Anemone nemorosa</i>	Wood Anemone										
<i>Angelica sylvestris</i>	Wild Angelica										

Wyre Forest Study Group

Taxon	Vernacular	07/04/2021	05/05/2021	07/07/2021	04/08/2021	14/08/2021	01/09/2021	06/10/2021	03/11/2021	01/12/2021	04/01/2022
<i>Anisantha sterilis</i>	Barren Brome										
<i>Anthoxanthum odoratum</i>	Sweet Vernal-grass										
<i>Anthriscus sylvestris</i>	Cow Parsley										
<i>Arabidopsis thaliana</i>	Thale Cress										
<i>Arctium lappa</i>	Greater Burdock										
<i>Arctium minus</i>	Lesser Burdock										
<i>Arrhenatherum elatius</i>	False Oat-Grass										
<i>Artemisia vulgaris</i>	Mugwort										
<i>Arum maculatum</i>	Lords-and-Ladies										
<i>Atriplex patula</i>	Common Orache										
<i>Ballota acetabulosa</i>	False Dittany										
<i>Ballota nigra</i>	Black Horehound										
<i>Bellis perennis</i>	Daisy										
<i>Betonica officinalis</i>	Betony										
<i>Betula pendula</i>	Silver Birch										
<i>Bidens tripartita</i>	Trifid Bur-marigold										
<i>Brachypodium sylvaticum</i>	False-brome										
<i>Brassica nigra</i>	Black Mustard										
<i>Bromopsis ramosa</i>	Hairy-brome										
<i>Bromus hordeaceus</i>	Soft-brome										
<i>Buddleja davidii</i>	Butterfly-bush										
<i>Calluna vulgaris</i>	Heather										
<i>Calystegia sepium</i>	Hedge Bindweed										
<i>Calystegia silvatica</i>	Large Bindweed										
<i>Campanula persicifolia</i>	Peach-leaved Bellflower										
<i>Capsella bursa-pastoris</i>	Shepherd's-purse										
<i>Cardamine flexuosa</i>	Wavy Bitter-cress										
<i>Cardamine hirsuta</i>	Hairy Bitter-cress										
<i>Cardamine pratensis</i>	Cuckooflower										
<i>Carduus crispus</i>	Wetted Thistle										
<i>Carex demissa</i>	Common Yellow-sedge										
<i>Carex otrubae</i>	False Fox-sedge										
<i>Carex pendula</i>	Pendulous Sedge										
<i>Carex pilulifera</i>	Pill Sedge										
<i>Carex remota</i>	Remote Sedge										
<i>Carex sylvatica</i>	Wood-sedge										
<i>Centaurea nigra</i>	Common Knapweed										
<i>Centaurium erythraea</i>	Common Centaury										
<i>Centranthus ruber</i>	Red Valerian										
<i>Cerastium arvense</i>	Field Mouse-ear										
<i>Cerastium fontanum</i>	Common Mouse-ear										

Wyre Forest Study Group

Taxon	Vernacular	07/04/2021	05/05/2021	07/07/2021	04/08/2021	14/08/2021	01/09/2021	06/10/2021	03/11/2021	01/12/2021	04/01/2022
<i>Cerastium glomeratum</i>	Sticky Mouse-ear										
<i>Chamerion angustifolium</i>	Rosebay Willowherb										
<i>Chelidonium majus</i>	Greater Celandine										
<i>Circaea lutetiana</i>	Enchanter's-nightshade										
<i>Cirsium arvense</i>	Creeping Thistle										
<i>Cirsium palustre</i>	Marsh Thistle										
<i>Cirsium vulgare</i>	Spear Thistle										
<i>Cochlearia danica</i>	Danish Scurvygrass										
<i>Convolvulus arvensis</i>	Field Bindweed										
<i>Conyza floribunda</i>	Bilbao's Fleabane										
<i>Conyza sumatrensis</i>	Guernsey Fleabane										
<i>Corylus avellana</i>	Hazel										
<i>Crataegus monogyna</i>	Hawthorn										
<i>Crepis capillaris</i>	Smooth Hawk's-beard										
<i>Crepis vesicaria</i>	Beaked Hawk's-beard										
<i>Cymbalaria muralis</i>	Ivy-leaved Toadflax										
<i>Cynosurus cristatus</i>	Crested Dog's-tail										
<i>Cytisus scoparius</i>	Broom										
<i>Dactylis glomerata</i>	Cock's-foot										
<i>Deschampsia cespitosa</i>	Tufted Hair-grass										
<i>Digitalis purpurea</i>	Foxglove										
<i>Diploaxis muralis</i>	Annual Wall-rocket										
<i>Dipsacus fullonum</i>	Wild Teasel										
<i>Dipsacus pilosus</i>	Small Teasel										
<i>Echinochloa crus-galli</i>	Cockspur										
<i>Elytrigia repens</i>	Common Couch										
<i>Epilobium ciliatum</i>	American Willowherb										
<i>Epilobium hirsutum</i>	Great Willowherb										
<i>Epilobium montanum</i>	Broad-leaved Willowherb										
<i>Epilobium palustre</i>	Marsh Willowherb										
<i>Epilobium parviflorum</i>	Hoary Willowherb										
<i>Equisetum arvense</i>	Field Horsetail										
<i>Erigeron karvinskianus</i>	Mexican Fleabane										
<i>Erodium cicutarium</i>	Common Stork's-bill										
<i>Erophila verna</i>	Common Whitlowgrass										
<i>Eupatorium cannabinum</i>	Hemp-agrimony										
<i>Euphorbia amygdaloides</i>	Wood Spurge										
<i>Euphorbia helioscopia</i>	Sun Spurge										
<i>Euphorbia peplus</i>	Petty Spurge										
<i>Euphrasia</i> agg.	Eyebright										

Wyre Forest Study Group

Taxon	Vernacular	07/04/2021	05/05/2021	07/07/2021	04/08/2021	14/08/2021	01/09/2021	06/10/2021	03/11/2021	01/12/2021	04/01/2022
<i>Festuca rubra</i>	Red Fescue										
<i>Ficaria verna</i>	Lesser Celandine										
<i>Filipendula ulmaria</i>	Meadowsweet										
<i>Fumaria muralis</i>	Common Ramping-fumitory										
<i>Galeopsis tetrahit</i>	Common Hemp-nettle										
<i>Galinsoga parviflora</i>	Gallant Soldier										
<i>Galinsoga quadriradiata</i>	Shaggy Soldier										
<i>Galium album</i>	Hedge Bedstraw										
<i>Galium aparine</i>	Cleavers										
<i>Galium palustre</i>	Marsh-bedstraw										
<i>Galium verum</i>	Lady's Bedstraw										
<i>Geranium dissectum</i>	Cut-leaved Crane's-bill										
<i>Geranium molle</i>	Dove's-foot Crane's-bill										
<i>Geranium pusillum</i>	Small-flowered Crane's-bill										
<i>Geranium robertianum</i>	Herb-Robert										
<i>Geum urbanum</i>	Wood Avens										
<i>Glechoma hederacea</i>	Ground-ivy										
<i>Gnaphalium uliginosum</i>	Marsh Cudweed										
<i>Hedera helix</i>	Common Ivy										
<i>Helianthus annuus</i>	Sunflower										
<i>Helminthotheca echinoides</i>	Bristly Oxtongue										
<i>Heracleum sphondylium</i>	Hogweed										
<i>Hesperis matronalis</i>	Dame's-violet										
<i>Hieracium sabaudum</i>	Autumn Hawkweed										
<i>Holcus lanatus</i>	Yorkshire-fog										
<i>Holcus mollis</i>	Creeping Soft-grass										
<i>Hordeum murinum</i>	Wall Barley										
<i>Hordeum vulgare</i>	Six-rowed Barley										
<i>Hyacinthoides x massartiana</i>	Hybrid Bluebell										
<i>Hypericum androsaemum</i>	Tutsan										
<i>Hypericum perforatum</i>	Perforate St John's-wort										
<i>Hypericum pulchrum</i>	Slender St John's-wort										
<i>Hypericum x desetangsii</i>	H. maculatum x perforatum										
<i>Hypochaeris radicata</i>	Cat's-ear										
<i>Impatiens glandulifera</i>	Indian Balsam										
<i>Juncus acutiflorus</i>	Sharp-flowered Rush										
<i>Juncus bufonius</i>	Toad Rush										

Wyre Forest Study Group

Taxon	Vernacular	07/04/2021	05/05/2021	07/07/2021	04/08/2021	14/08/2021	01/09/2021	06/10/2021	03/11/2021	01/12/2021	04/01/2022
<i>Juncus effusus</i>	Soft-rush										
<i>Juncus inflexus</i>	Hard Rush										
<i>Juncus tenuis</i>	Slender Rush										
<i>Kickxia elatine</i>	Sharp-leaved Fluellen										
<i>Lactuca serriola</i>	Prickly Lettuce										
<i>Lamium album</i>	White Dead-nettle										
<i>Lamium hybridum</i>	Cut-leaved Dead-nettle										
<i>Lamium purpureum</i>	Red Dead-nettle										
<i>Lapsana communis</i>	Nipplewort										
<i>Lathyrus linifolius</i>	Bitter-vetch										
<i>Lathyrus pratensis</i>	Meadow Vetchling										
<i>Leontodon hispidus</i>	Rough Hawkbit										
<i>Leontodon saxatilis</i>	Lesser Hawkbit										
<i>Lepidium didymum</i>	Lesser Swine-cress										
<i>Leucanthemum vulgare</i>	Oxeye Daisy										
<i>Leucojum aestivum</i>	Summer Snowflake										
<i>Linaria vulgaris</i>	Common Toadflax										
<i>Linum catharticum</i>	Fairy Flax										
<i>Linum usitatissimum</i>	Flax										
<i>Lobularia maritima</i>	Sweet Alison										
<i>Lolium perenne</i>	Perennial Rye-grass										
<i>Lonicera periclymenum</i>	Honeysuckle										
<i>Lotus corniculatus</i>	Common Bird's-foot-trefoil										
<i>Lotus pedunculatus</i>	Greater Bird's-foot-trefoil										
<i>Lunaria annua</i>	Honesty										
<i>Luzula campestris</i>	Field Wood-rush										
<i>Luzula multiflora</i>	Heath Wood-rush										
<i>Luzula sylvatica</i>	Great Wood-rush										
<i>Lycopus europaeus</i>	Gypsywort										
<i>Lysimachia nemorum</i>	Yellow Pimpernel										
<i>Lythrum salicaria</i>	Purple-loosestrife										
<i>Malus pumila</i>	Apple										
<i>Malus sylvestris</i>	Crab Apple										
<i>Malva moschata</i>	Musk-mallow										
<i>Malva sylvestris</i>	Common Mallow										
<i>Matricaria discoidea</i>	Pineappleweed										
<i>Medicago lupulina</i>	Black Medick										
<i>Melampyrum pratense</i>	Common Cow-wheat										
<i>Melica uniflora</i>	Wood Melick										
<i>Melissa officinalis</i>	Balm										
<i>Mentha aquatica</i>	Water Mint										
<i>Mercurialis perennis</i>	Dog's Mercury										

Wyre Forest Study Group

Taxon	Vernacular	07/04/2021	05/05/2021	07/07/2021	04/08/2021	14/08/2021	01/09/2021	06/10/2021	03/11/2021	01/12/2021	04/01/2022
<i>Mycelis muralis</i>	Wall Lettuce										
<i>Myosotis arvensis</i>	Field Forget-me-not										
<i>Myosotis ramosissima</i>	Early Forget-me-not										
<i>Myosotis sylvatica</i>	Wood Forget-me-not										
<i>Odontites vernus</i>	Red Bartsia										
<i>Oxalis corniculata</i>	Procumbent Yellow-sorrel										
<i>Oxalis exilis</i>	Least Yellow-sorrel										
<i>Parietaria judaica</i>	Pellitory-of-the-Wall										
<i>Pentaglottis sempervirens</i>	Green Alkanet										
<i>Persicaria amphibia</i>	Amphibious Bistort										
<i>Persicaria hydropiper</i>	Water-pepper										
<i>Persicaria maculosa</i>	Redshank										
<i>Phalaris arundinacea</i>	Reed Canary-grass										
<i>Phalaris canariensis</i>	Canary-grass										
<i>Phleum pratense</i>	Timothy										
<i>Pilosella officinarum</i>	Mouse-ear-hawkweed										
<i>Plantago coronopus</i>	Buck's-horn Plantain										
<i>Plantago lanceolata</i>	Ribwort Plantain										
<i>Plantago major</i>	Greater Plantain										
<i>Poa annua</i>	Annual Meadow-grass										
<i>Poa pratensis</i>	Smooth Meadow-grass										
<i>Poa trivialis</i>	Rough Meadow-grass										
<i>Polygonum arenastrum</i>	Equal-leaved Knotgrass										
<i>Polygonum aviculare</i>	Knotgrass										
<i>Polypogon viridis</i>	Water Bent										
<i>Potentilla anserina</i>	Silverweed										
<i>Potentilla erecta</i>	Tormentil										
<i>Potentilla reptans</i>	Creeping Cinquefoil										
<i>Potentilla sterilis</i>	Barren Strawberry										
<i>Potentilla x italica</i>	P. erecta x reptans										
<i>Primula veris</i>	Cowslip										
<i>Primula vulgaris</i>	Primrose										
<i>Prunella vulgaris</i>	Selfheal										
<i>Prunus domestica</i> subsp. <i>insititia</i>	Damson / Bullace										
<i>Prunus spinosa</i>	Blackthorn										
<i>Pulicaria dysenterica</i>	Common Fleabane										
<i>Quercus robur</i>	Pedunculate Oak										
<i>Quercus</i> sp.	An oak										
<i>Ranunculus acris</i>	Meadow Buttercup										
<i>Ranunculus bulbosus</i>	Bulbous Buttercup										
<i>Ranunculus repens</i>	Creeping Buttercup										

Wyre Forest Study Group

Taxon	Vernacular	07/04/2021	05/05/2021	07/07/2021	04/08/2021	14/08/2021	01/09/2021	06/10/2021	03/11/2021	01/12/2021	04/01/2022
<i>Raphanus raphanistrum</i>	Wild Radish										
<i>Reseda luteola</i>	Weld										
<i>Ribes sanguineum</i>	Flowering Currant										
<i>Ribes uva-crispa</i>	Gooseberry										
<i>Rorippa sylvestris</i>	Creeping Yellow-cress										
<i>Rosa arvensis</i>	Field-rose										
<i>Rubus fruticosus</i> agg.	Bramble										
<i>Rumex acetosella</i>	Sheep's Sorrel										
<i>Rumex obtusifolius</i>	Broad-leaved Dock										
<i>Rumex sanguineus</i>	Wood Dock										
<i>Sagina apetala</i>	Annual Pearlwort										
<i>Sagina procumbens</i>	Procumbent Pearlwort										
<i>Salix caprea</i>	Goat Willow										
<i>Schedonorus arundinaceus</i>	Tall Fescue										
<i>Scrophularia auriculata</i>	Water Figwort										
<i>Scrophularia nodosa</i>	Common Figwort										
<i>Sedum acre</i>	Biting Stonecrop										
<i>Senecio aquaticus</i>	Marsh Ragwort										
<i>Senecio inaequidens</i>	Narrow-leaved Ragwort										
<i>Senecio jacobaea</i>	Common Ragwort										
<i>Senecio squalidus</i>	Oxford Ragwort										
<i>Senecio vulgaris</i>	Groundsel										
<i>Serratula tinctoria</i>	Saw-wort										
<i>Silene dioica</i>	Red Campion										
<i>Silene latifolia</i>	White Campion										
<i>Sisymbrium officinale</i>	Hedge Mustard										
<i>Solanum dulcamara</i>	Bittersweet										
<i>Solanum lycopersicum</i>	Tomato										
<i>Solanum nigrum</i>	Black Nightshade										
<i>Solidago virgaurea</i>	Goldenrod										
<i>Sonchus arvensis</i>	Perennial Sow-thistle										
<i>Sonchus asper</i>	Prickly Sow-thistle										
<i>Sonchus oleraceus</i>	Smooth Sow-thistle										
<i>Stachys palustris</i>	Marsh Woundwort										
<i>Stachys sylvatica</i>	Hedge Woundwort										
<i>Stellaria aquaticum</i>	Water Chickweed										
<i>Stellaria graminea</i>	Lesser Stitchwort										
<i>Stellaria holostea</i>	Greater Stitchwort										
<i>Stellaria media</i>	Common Chickweed										
<i>Succisa pratensis</i>	Devil's-bit Scabious										
<i>Symphytum x uplandicum</i>	Russian Comfrey										

Wyre Forest Study Group

Taxon	Vernacular	07/04/2021	05/05/2021	07/07/2021	04/08/2021	14/08/2021	01/09/2021	06/10/2021	03/11/2021	01/12/2021	04/01/2022
<i>Syringa vulgaris</i>	Lilac										
<i>Tamus communis</i>	Black Bryony										
<i>Tanacetum vulgare</i>	Tansy										
<i>Taraxacum</i> agg.	Dandelion										
<i>Teesdalia nudicaulis</i>	Shepherd's Cress										
<i>Teucrium scorodonia</i>	Wood Sage										
<i>Torilis japonica</i>	Upright Hedge-parsley										
<i>Trifolium dubium</i>	Lesser Trefoil										
<i>Trifolium pratense</i>	Red Clover										
<i>Trifolium repens</i>	White Clover										
<i>Tripleurospermum inodorum</i>	Scentless Mayweed										
<i>Triticum aestivum</i>	Bread Wheat										
<i>Tussilago farfara</i>	Colt's-foot										
<i>Typha latifolia</i>	Bulrush										
<i>Ulex europaeus</i>	Gorse										
<i>Ulex gallii</i>	Western Gorse										
<i>Urtica dioica</i>	Common Nettle										
<i>Valerianella locusta</i>	Common Cornsalad										
<i>Verbascum nigrum</i>	Dark Mullein										
<i>Veronica agrestis</i>	Green Field-speedwell										
<i>Veronica arvensis</i>	Wall Speedwell										
<i>Veronica chamaedrys</i>	Germander Speedwell										
<i>Veronica hederifolia</i>	Ivy-leaved Speedwell										
<i>Veronica officinalis</i>	Heath Speedwell										
<i>Veronica persica</i>	Common Field-speedwell										
<i>Veronica serpyllifolia</i>	Thyme-leaved Speedwell										
<i>Vicia hirsuta</i>	Hairy Tare										
<i>Vicia sativa</i>	Common Vetch										
<i>Vicia sepium</i>	Bush Vetch										
<i>Vicia tetrasperma</i>	Smooth Tare										
<i>Vinca major</i>	Greater Periwinkle										
<i>Viola arvensis</i>	Field Pansy										
<i>Viola canina</i>	Heath Dog-violet										
<i>Viola odorata</i>	Sweet Violet										
<i>Viola riviniana</i>	Common Dog-violet										
<i>Vulpia myuros</i>	Rat's-tail Fescue										
<i>Zea mays</i>	Maize										