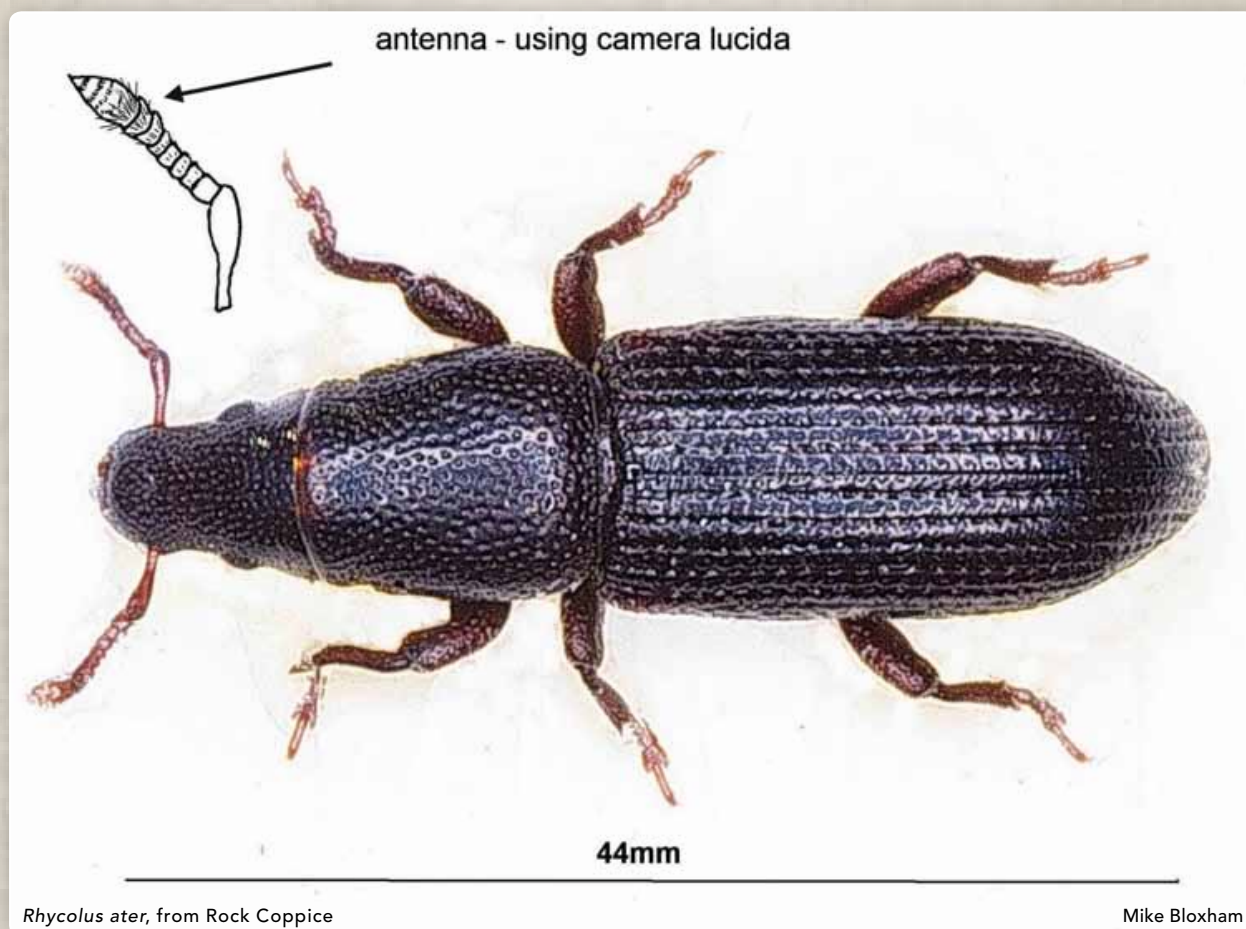


An addition to the Wyre Coleoptera list

MIKE BLOXHAM



Whilst reviewing weevils in my collection, I came across this fascinating specimen from a foray in the last century!

22nd March 1997 was a good day for a visit to Rock Coppice because a special search for early solitary bees saw the addition of *Andrena apicata* to the aculeate list. A small black weevil was also taken from a fallen pine section and was forgotten until a revision of weevils in my collection took place during this August.

Using 'True Weevils' (RES Handbooks- Part 1) by Mike

Morris, I was able to name it as *Rhyncholus ater* (L). Small black weevils are easily overlooked and this one has obviously escaped the attention of many beetle hunters. It seems to have a stronghold in Caledonian pine forests with a scattering of English records. The Saproxylic Quality Index for these forests gives this weevil a score of 8. It does not appear in the list used to evaluate woodlands in England or Wales.

It is possible that it arrived in Wyre as a consequence of past forestry activities.

